

# ferris&co



£1350 pcm

Holding deposit equivalent to 1 week's rent on application



Flat 2, Guinevere Point, Waterhouse Avenue,  
Maidstone, ME14 2FJ

TEL: 01622 737800  
Email:  
[lettings@ferrisandco.net](mailto:lettings@ferrisandco.net)  
[www.ferrisandco.net](http://www.ferrisandco.net)

Westwood House  
Thurnham Lane  
Maidstone, Kent  
ME14 4QZ

## DESCRIPTION

Splendid opportunity to let this brand new ultra-modern apartment set on the lower floor of this landmark building, which dominates the County Town's skyline. Fitted to a high specification with en-suite bedroom and balcony enjoying an eastern aspect. Allocated parking Space.

Set amidst the historic charm of the County Town of Kent with the river Medway meandering through Maidstone. Conveniently placed within easy striking distance of the town centre with its excellent selection of amenities which include the Fremlins Walk shopping area, two museums, theatre, county library, multi-screen cinema and two railway stations connected to London. A short walk along the tow path takes you to the Melleninum Park. The M20/A20/M25/M26 & M2 are all close by and offer direct vehicular access to London and the Channel Ports

## ENTRANCE HALL

Oak strip wood flooring and skirtings. Large storage cupboard.

## KITCHEN/LIVING/DINING AREA 21' 6" x 17' 0" (narrowing to 15'4 in dining area) (6.55m x 5.18m)

**KITCHEN:-** Fitted kitchen with Ivory high gloss door and drawer fronts. Granite working surfaces with upstands. Stainless steel sink with curved tap with clipped hose-spray extension. Integrated Zanussi fridge freezer, dishwasher, washer/dryer, oven, electric hob and stainless steel chimney style extractor hood over. LED under cupboard lighting.

**LIVING/DINING AREA:-** Double casement doors leading onto the balcony with an eastern aspect. Floor to ceiling window with southern aspect. Two double radiators.

## BEDROOM 1 15' 9"(narrowing to 8'9) x 11' 0" (4.80m x 3.35m)

Built in wardrobes with sliding doors. Window to side, double radiator. Oak strip wood flooring and skirting.

## EN-SUITE

Luxuriously appointed suite comprising of Fascino double walk in smart shower with rain forest head and hand shower. Fully tiled walls. Oval hand wash basin with digitally controlled smart tap. Walnut vanity unit with black porcelain worktop, storage under and splash back. Low level w.c with concealed cistern. Large wall mounted smart mirror with LED lighting, shaver socket and de-mist pad. Chromium plated heated towel rail and porcelain tiled flooring.

## BEDROOM 2 16' 6" x 11' 9" (5.03m x 3.58m)

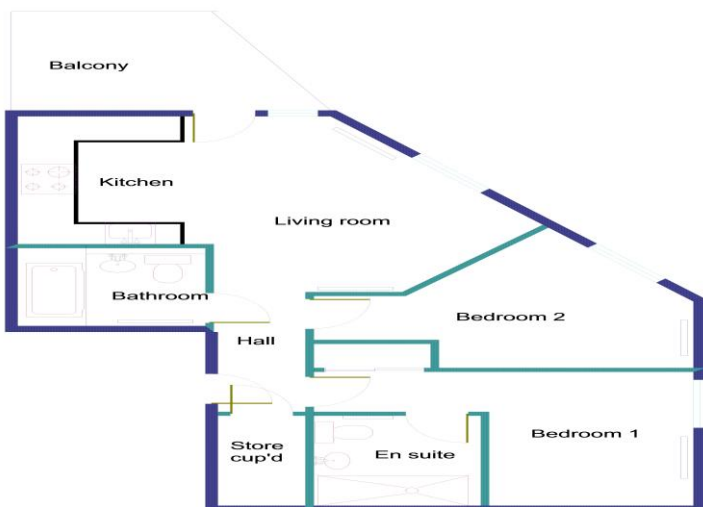
Window to side. Double radiator. Oak strip wood flooring.

## BATHROOM

Luxuriously appointed suite comprising of Fascino smart bath with low level LED strip lighting. Fully tiled walls. Oval hand wash basin with digitally controlled smart tap. Walnut vanity unit with black porcelain worktop, storage under and splash back. Low level w.c with concealed cistern. Large wall mounted smart mirror with LED lighting, shaver socket and de-mist pad. Chromium plated heated towel rail and porcelain tiled flooring.

## BALCONY

Composite decking with railing boundary and plate glass screening. Enjoying an eastern aspect.



Floor area 709 sq' approximately.

N.B: Not to scale, for guidance only.

## DIRECTIONS

From our Penenden Heath office, proceed in a westerly direction on the Sandling Lane until you reach the Harvesters Running Horse Roundabout. Take the first exit towards Maidstone Town Centre. At the first roundabout take the third exit following signs to Springfield and The Creswick Building will be found directly in front of you.